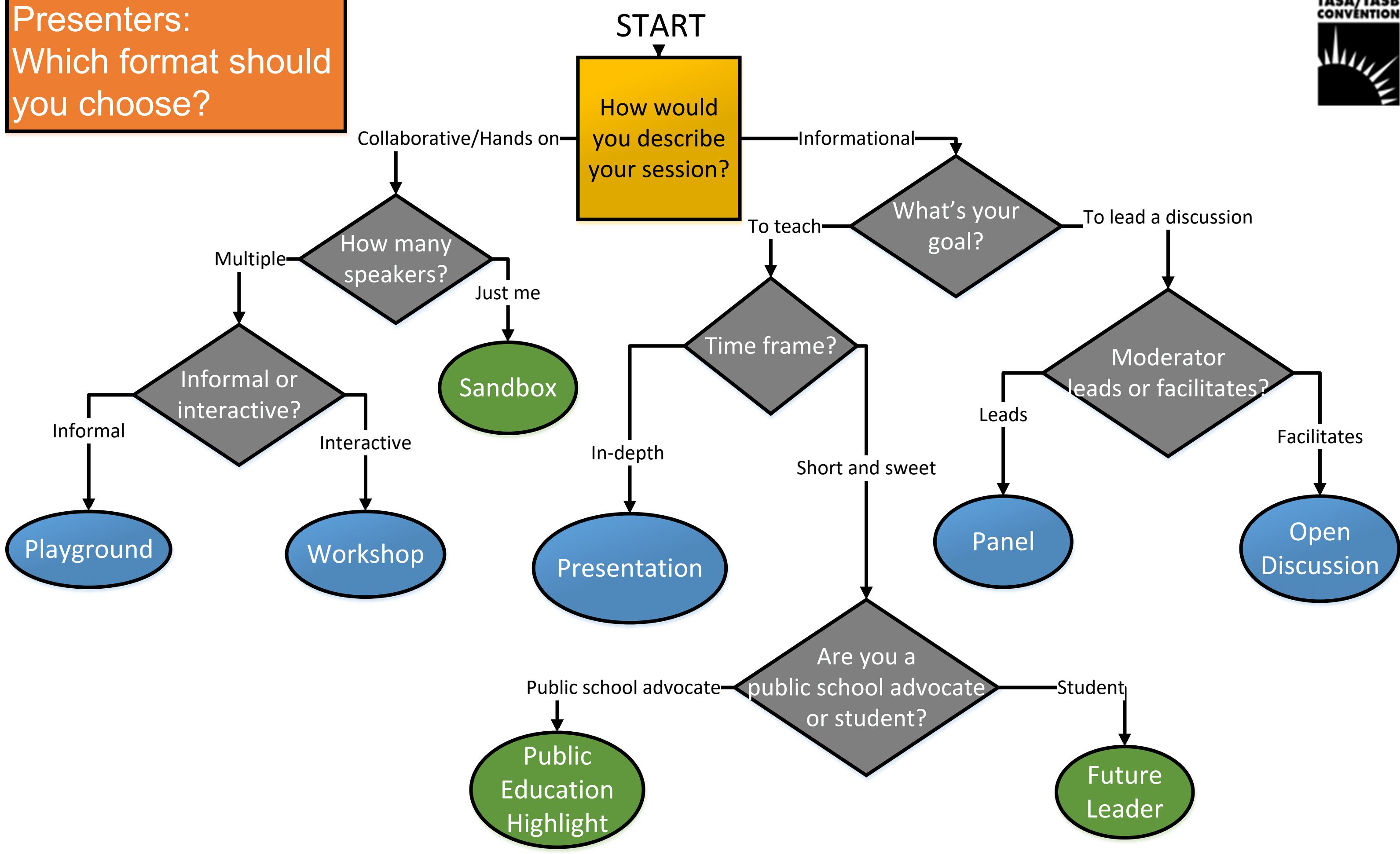


**Presenters:
Which format should you choose?**



1-Hour Session Formats

Presentation (1 hour, 2-4 speakers)

Formal presentation designed to inform the audience about a specific issue or topic and demonstrate key components of a particular education approach

Panel (1 hour, 3-6 speakers)

Moderator led discussion with experts in the field with opportunity for audience Q&A

Open Discussion (1 hour, 1-4 speakers)

Moderator facilitated in-depth conversation with participants serving as key contributors around a specific issue or topic concerning education

Playground (1 hour, 2-4 speakers)

Informal session that facilitates hands-on, interactive, and creative learning techniques

Workshop (1 hour, 1-4 speakers)

Interactive opportunity for audience members to participate directly in the learning and glean resources/approaches to take back to their district or campus

30-Minute Session Formats

Public Education Highlight (30 min, 1-3 speakers)

Short presentation featuring innovative programs by Texas school districts and schools

Future Leader (30 min, 1-2 speakers)

A student presentation offering insights from his or her experiences in Texas public schools

Sandbox (30 min, 1 speaker)

Bite-sized informal session that facilitates hands-on, interactive, and creative learning techniques